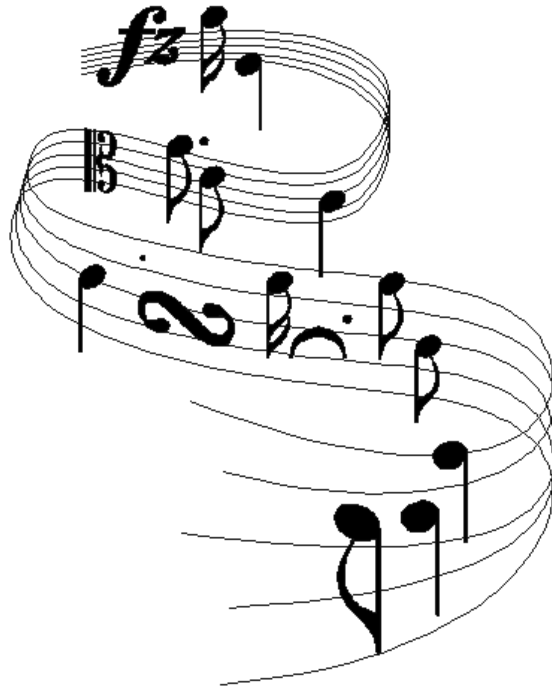


# CONNECTICUT VALLEY MUSIC FESTIVAL ASSOCIATION

Vermont Music Educators Association  
District VI

Festival Handbook 2011-2012  
[www.vmea.org](http://www.vmea.org)



Vermont Music Educators Association - District VI Mission Statement:

*To create enriching musical experiences, with high standards of musicianship and responsibility, for students of Vermont Music Educators Association District VI and to encourage as many of those students as possible to meet those standards and participate in the Association's festivals.*

## OFFICERS

CHAIRPERSON: Connie Wilcox  
Black River High School  
45 Main Street  
Ludlow, VT 05149  
[wilcoxc@brhsms.org](mailto:wilcoxc@brhsms.org)

SECRETARY: Allison Good  
Black River High School  
43 Main Street  
Ludlow, VT 05149  
[gooda@brhsms.org](mailto:gooda@brhsms.org)

TREASURER: Paul Rondinone  
677 Dawson Road  
East Wallingford, VT 05742  
[p\\_a\\_r@vermontel.net](mailto:p_a_r@vermontel.net)

## MANAGERS

HIGH SCHOOL BAND MANAGER: Steve Rice, Brattleboro Union High School  
[steve\\_rice@wsesu.org](mailto:steve_rice@wsesu.org)

HIGH SCHOOL CHORUS MANAGER: Ron Kelley, Leland and Gray Union High School  
[rkelly@lelandandgray.org](mailto:rkelly@lelandandgray.org)

HIGH SCHOOL JAZZ BAND MANAGER: Fritz Wendlandt, Green Mountain High School  
& Nick Pelton, Bellows Falls Union High School  
[fwendlandt@wsusu.org](mailto:fwendlandt@wsusu.org)  
[npelton@wnesu.net](mailto:npelton@wnesu.net)

HIGH SCHOOL JAZZ CHOIR MANAGER: Sue Maddern, Twin Valley High School  
[smaddern@myfairpoint.net](mailto:smaddern@myfairpoint.net)

MIDDLE SCHOOL BAND MANAGERS: Stan Rumrill, Bellows Falls Middle School  
& Karen Horton, Twin Valley Middle School  
[stanrumrill@hotmail.com](mailto:stanrumrill@hotmail.com)  
[peartree4karen@myfairpoint.net](mailto:peartree4karen@myfairpoint.net)

MIDDLE SCHOOL CHORUS MANAGER: Kristen Chapman, Hartford Middle School  
[chapmank@hartfordschools.net](mailto:chapmank@hartfordschools.net)

MIDDLE SCHOOL JAZZ BAND MANAGER: Stan Rumrill, Bellows Falls Middle School  
& Karen Horton, Twin Valley Middle School  
[stanrumrill@hotmail.com](mailto:stanrumrill@hotmail.com)  
[peartree4karen@myfairpoint.net](mailto:peartree4karen@myfairpoint.net)

DISTRICT LIBRARIANS: Rob Gattie (Choral), Hartford High School, [gattier@hartfordschools.net](mailto:gattier@hartfordschools.net)  
Erica Howard (Band), Hartford High School, [howarde@hartfordschools.net](mailto:howarde@hartfordschools.net)

## AUDITIONS

### Fall Auditions:

Monday, October 3, 2011 – Dummerston Elementary School  
Host/Coordinator(s): Mary Bandish, Rita Corey  
Dummerston Elementary School  
52 Schoolhouse Road  
E. Dummerston, VT 05346  
[Mary\\_H\\_Bandish@wsesu.org](mailto:Mary_H_Bandish@wsesu.org)

### Winter Auditions:

**Tuesday**, December 6, 2011 – Green Mountain Union High School  
Hosts: Fritz Wendlandt, [fwendlandt@wswsu.org](mailto:fwendlandt@wswsu.org)  
Cindi Austin, [caustin@wswsu.org](mailto:caustin@wswsu.org)

Snow Date, Monday December 12, 2011  
Coordinator: Polly Westcott  
Chester-Andover Elementary School  
72 Main Street  
Chester, VT 05143  
[pwestcott@wswsu.org](mailto:pwestcott@wswsu.org)

### Festivals:

Fall Festival: November 18-19, 2011 – Brattleboro Union High School  
Winter Festival: February 3-4, 2012 – Hartford High School

### District Meetings:

Thursday, August 25, 2011	6:00pm Bellows Falls Union High School, Chorus room
Thursday, October 13, 2011	6:00pm Riverside Middle School for MS Chorus selection
Saturday, November 19, 2011	10:00am Brattleboro Union High School, during the Fall Festival
Saturday, February 4, 2012	10:00am Hartford High School during the Winter Festival

## **Directions to Meetings and Auditions**

### **Kurn Hattin**

Take exit 5, turn left at the end of the ramp. Turn right onto the first street on the right called “Westminster Heights Road”. The Kurn Hattin campus is 2 miles ahead.

### **Riverside Middle School**

From I-91 take exit 7; turn or merge onto VT Rt. 11 West for about 5 miles; turn right on Fairground Road.

### **Green Mountain**

From I-91 take exit 6; follow US-103 approximately 8 miles to GMUHS. It will be on your left.

### **Bellows Falls High School**

Take exit 5 toward US-5/VT-121; merge onto I-91 access road/Westminster St Hwy; turn left onto US-5 North; follow for about 1.7 miles; turn left at High School Road; the school is at the end of High School road.

### **Windsor High School**

#### From the North:

I-91 Exit 9. Turn left at US-5/US-12. Turn right at State Street. Turn left at Ascutney Street.

#### From the South:

I-91 Exit 8. Turn right at US-131. Turn left at US-5/US-12. Turn left at State Street. Turn left at Ascutney Street.

### **Bellows Falls Middle School**

#### From the North:

Take Exit 6 from I-91. Follow Rt. 103 which then becomes Rt.5 South into Bellows Falls. Stay on Rt. 5 which becomes Atkinson St. At the 4-way stop, turn left onto School St. The Middle School is on the left.

#### From the West:

Take Rt. 103 East, and proceed as above.

#### From the South:

Take Exit 5 from I-91. Turn right off the ramp onto the access road. At Rt. 5, turn left and follow Rt. 5 North into Bellows Falls. At the light, continue straight onto Atkinson St. Follow above directions except turn right onto School St.

### **Dummerston Elementary School**

Take Exit 4 from I-91 toward Putney. Turn left on US Rt. 5 for 2.4 miles. Turn right on School House Road. School is on the right.

## GENERAL MEMBERSHIP NOTES:

- While individual teachers are not required to assist in the running of any given festival, excluding those already involved in it, it is understood that all participating students are required to have at least one teacher or principal approved chaperone present at all times. Alert the chairperson of any teacher conflicts ahead of time so that someone can be appointed and approved to take their place for the period of time in question. Each teacher/chaperone is expected to assist in student supervision.
- All payment requests need to be written on a voucher form and turned in to the treasurer.
- Participation forms must be postmarked by the due date at the latest in order to participate. Fees must be **sent directly to the treasurer:**

Paul Rondinone, District VI Treasurer  
677 Dawson Hill Road  
East Wallingford, VT 05742
- Use of photocopies in auditions will result in disqualification

## Festival Due Dates

### **Fall Festival** (MS Chorus/HS Band/HS Jazz Choir/MS Jazz Band)

Friday, Sept. 16, 2011 (postmarked) - **Audition applications for H.S. Band, M.S. Jazz Band, H.S. Jazz Choir and \$3.00/student fees** due to Audition coordinators, Mary Bandish, Dummerston Elementary School, 52 Schoolhouse Road, E. Dummerston, VT 05346.

Friday, September 30, 2011 (postmarked) – **Middle School Chorus nominee form, audition rubric/scoresheets and \$3.00/student fees** due to Kristen Chapman, Hartford Memorial Middle School, 245 Highland Ave., White River Jct., VT 05001

Friday, October 28, 2011 (postmarked by) **Festival Participation forms and 10.00/student fees due to Treasurer:** Paul Rondinone, CVMFA Treasurer, 677 Dawson Hill Road, East Wallingford, VT 05742

### **Winter Festival** (MS Band/HS Chorus/HS Jazz Band)

Friday, November 11, 2011 (postmarked) .... **Audition applications and \$3.00/student fees** due to Polly Westcott, Chester-Andover Elementary School, 72 Main St., Chester, VT 05143

Friday, January 20, 2011 (postmarked by) **Festival Participation forms and \$10.00/student fees due to Treasurer:** Paul Rondinone, CVMFA Treasurer, 677 Dawson Hill Road, East Wallingford, VT 05742

## 2011 - 2012 Budget:

### Expenses:

Conductors	450x7	3150
Accompanists	175x3	525
Piano Tuning	140x2	280
Music Purchase	(variable)	1500
Mileage .40/mile for Conductors	115x7	805
Lodging for Conductors (90 x 7)		630
Meals for Conductors (dinner/no alcohol)		200
Meals for Managers (dinner/no alcohol)		200
Lunches for Conductors and Managers		300
Hospitality Room		175
Postage (estimate)		175
Programs		300
Police	100x2	200
Custodians	125x2	250
Auditions – refreshments		200
Auditions – forms		100
Officer's Expenses:		
VMEA Liability		100
Secretary and Treasurer		50
VMEA mileage		275
	<b>TOTAL</b>	<b>\$ 9415</b>

### Income:

Lost and sold music	40	
Participation fees at \$10 per student x 400	4000	
At door Sale of Tickets	3575	
Audition Fees \$3 x 600	1800	
	<b>TOTAL</b>	<b>\$ 9415</b>

### **Other Financial Aspects:**

1. Ticket prices for all festivals  
    adult \$6.00      student/senior citizen \$4.00
2. Mileage reimbursement rate \$0.40/mile
3. Refunds for Non-participants -\$0-
4. Mileage reimbursement is available for conductors, but not for accompanists.
5. Expenses for conductors include lodging, meals and travel. Expenses do NOT include personal telephone calls, alcoholic beverages, or spouses lodging.

## **JOB DESCRIPTIONS**

### **Chairperson:**

1. Attend all VMEA Executive Board meetings; District VI to pay for mileage
2. Attend and preside over all District VI meetings
3. Introduce all festival performances
4. For each meeting, coordinate presentations by the secretary, treasurer, ensemble managers, festival hosts, and other reports concerning district VI
5. Update district handbook and distribute at the annual August meeting to begin the new school year. Mail the handbook to those not attending the meeting.
6. Contact all participating school principals at the beginning of each school year to let them know of all district audition and festival dates prior to the start of the new school year
7. Contact any new members of the district either verbally or in writing prior to the start for the new school year
8. Check with managers and treasurer to see that all fees and forms have been received by the given due dates
9. Contract with host schools for fall and winter festivals
10. Serve a two-year position
11. Select and present an award to the outstanding music educator of the district

### **Secretary:**

1. Take minutes of all meetings and distribute to all district teachers
2. Send agendas and maps for upcoming meetings to all district teachers
3. Keep historical book up to date and bring to festivals
4. Retain copies of festival programs for future reference
5. Serve a two-year position

### **Treasurer:**

1. Keep an accurate ledger record of the district's finances
2. Pay all bills (by check) and record all transactions
3. Receive all fees for festival participation from each school
4. Present written financial statement for distribution at each district meeting
5. Have checks ready for conductors and accompanist at conclusion of festivals
6. Prepare cash-boxes for all festival performances and collect admission fees
7. Stay aware of current financial status, and alert chairperson of any problems
8. Serve a two-year position

### **Audition Hosts:**

1. Secure proper number of audition rooms; two with piano, one with percussion equipment (timpani, drum set, etc.)
2. Set up and monitor information/check-in desk
3. Provide map of audition areas and monitors for each room
4. Provide "directors room" for munchies and coffee (teachers & adjudicators only)
5. Obtain adjudicators for each audition room
6. Obtain score sheets from last audition host
7. Provide adjudicators with appropriate sight singing material

8. Compile schedule.
9. Mail schedule, sample score sheets, sight-reading material and audition piece to the adjudicator prior to the auditions
10. Tell vocal judges to be prepared to sing
11. Give copy of preference sheets to all managers

### Adjudicators:

1. Be positive; keep comments constructive and supportive
2. Show respect and concern for the auditioning student
3. Provide encouragement
4. Be professional in your evaluation. Vocal adjudicators should not compare the auditioned voice to other voices in the quartet
5. Follow audition guidelines outlined in the handbook
6. Provide reasonable time for sight-reading
7. Check for original copy of audition piece
8. Scales must be played from memory with correct articulation and rhythm
9. Vocal adjudicators must be able to sing their part.

### Ensemble Managers:

1. Obtain guest conductor for specific group and festival. Guest Conductor will sign a copy of the guest conductor contract provided in the handbook.
2. To the guest conductor, send copies of past programs to suggest levels of difficulty and prevent duplication for music performed in recent festivals, suggest to guest conductor to plan a program that does not exceed 25-30 minutes and urge the guest conductor, whenever possible, to select music from the District library, VMEA library, etc.
3. Obtain from the guest conductor:
  - a. music selected for the program
  - b. program order
  - c. seating arrangements and instrumentation
  - d. special percussion and instrumental needs
  - e. professional biographical information for the program
  - f. special personal needs, if any
4. Upon receipt of information from guest conductor, pass on to festival host
5. Obtain in conjunction with host, accommodations/lodging for the guest conductor
6. Obtain accompanist
7. Obtain, record and distribute music for ensemble, leaving ample time for festival
8. Tabulate score sheets following auditions and determine instrumentation and voicing of ensembles
9. **Following auditions, mail results and adjudication sheets to all schools**
10. Send list of participating students and their respective schools to the festival host
11. Notify chairperson and treasurer of any student cancellations
12. Retain receipts of expenses for reimbursement
13. Coordinate concert attire of conductor and accompanist
14. Introduce the ensemble and conductor at the performance
15. Collect, collate and return music after the festival
16. Send bills and missing music to the appropriate director(s), collect the money and turn it in to the treasurer

17. District VI will provide for manager's dinner either Friday or Saturday night
18. High School Jazz manager will provide sight-reading material for the audition
19. Managers will coordinate with the host school procedures for lockdown and evacuation of the building.

### Guest Conductor and Accompanists:

Each guest conductor will choose his/her own concert program, with the assistance of the ensemble manager. If there is a problem with any aspect of the program, the manager will contact the conductor as soon as possible. Each guest conductor will have all the meals paid for, as well as lodging on the night before the concert if so chosen. The honorarium for conducting is \$450.00 plus mileage at the budgeted rate and expenses (see budget). Each accompanist, so chosen by the ensemble manager, will receive an honorarium of \$175.00.

### Festival Hosts:

1. Establish rehearsal area and arrange transportation if needed
2. Provide any needed equipment for the festival, including:
  - a. music stands
  - b. risers - instrumental and or choral
  - c. repair kit
  - d. percussion equipment
3. Provide estimated cost for meals, etc. to treasurer and chairperson
4. Provide publicity to local newspapers, T.V., and radio prior to the festival
5. Receive all program info. from the managers and have the program printed
6. Tune piano(s)
7. Provide custodial services
8. Provide separate room for teachers' lounge and meeting area
9. Provide refreshments for conductors and teachers
10. Provide registration table, schedules and nametags for all participants
11. Arrange for set-up and teardown crew for the concert
12. Alert chairperson of any cancellations or postponements
13. Must be present at all times during the festival
14. Alert all teachers and students to special rules and regulations that pertain especially to the host school.
15. Coordinate take-out lunches for teachers/conductors
16. Coordinate with ensemble managers an emergency or lockdown plan if the need arises.

## Audition Information

No photocopies are allowed. Use of photocopies will result in disqualification.

### High School Band

Wind auditions are comprised of the following:

- prepared piece - from rotating lists below
- major scales - see scale packet
- chromatic scale
- sight reading

Percussionists will audition on a specialty instrument (snare drum, timpani, or mallets) on which they will perform a solo, technique specific to that instrument, and sight read. In addition, they will each audition on auxiliary percussion instruments. Given that players of each specialty instrument earn acceptable scores, the top scoring player of each will be the first selected for the ensembles. The remainder of the positions will be filled by the highest scoring players regardless of specialty instrument.

### High School Chorus

- prepared piece - from rotating list, sung in 4 parts, unaccompanied
- prepared piece can be transposed up or down a whole step if desired

Adjudicators will fill in for missing parts. All adjudicators must be able to sing their part. All students will be auditioned as a full quartet.

### High School Jazz Band

#### **Wind Players:**

- Perform the required piece from Jamey Aebersold's *Maiden Voyage*, Volume 54 (see audition selection rotation) with the play-along recording in the following manner:
  - Play one complete time through the melody (i.e. play "the head"), demonstrating appropriate style and inflection;
  - Improvise a melody for one complete chorus (i.e. one time through the form);
  - Return to the head at the appropriate time (when the rhythm section gets to the point of the chord changes where the melody would begin). This time through the head will not be a complete version. The judge will stop the player soon after the return is heard.
- Improvise two complete choruses using either a concert B-flat or F blues. They will perform with the appropriate tracks from *Maiden Voyage* – for B-flat blues, use *Shuffle Time* (track 2) and for F blues, use *Tootsie* (track 12). The written melody is NOT to be performed in this part of the audition. Instead, melodic improvisation begins right away. The chord changes indicated for each piece should be used.
- Perform a short sight reading excerpt provided by the judge.

## High School Jazz Band (continued)

### **Guitar and Piano Players:**

- Perform the required piece from Jamey Aebersold's *Maiden Voyage*, Volume 54 (see audition selection rotation) with the play-along recording in the following manner:
  - Play one complete time through the melody (i.e. play "the head"), demonstrating appropriate style and inflection. If possible, the student should also play the chords that underlie the melody;
  - Comp one chorus of chords as if accompanying a melodic soloist;
  - Improvise a melody for one complete chorus (i.e. one time through the form);
  - Return to the head at the appropriate time (when the rhythm section gets to the point of the chord changes where the melody would begin). This time through the head will not be a complete version. The judge will stop the player soon after the return is heard.
- Improvise three complete choruses using either a concert B-flat or F blues. They will perform with the appropriate tracks from *Maiden Voyage* – for B-flat blues, use *Shuffle Time* (track 2) and for F blues, use *Tootsie* (track 12). The written melody is NOT to be performed in this part of the audition. The chord changes indicated for each piece should be used.
  - During the first chorus the player comps the chords as if accompanying a soloist.
  - During the second and third chorus, the player improvises melodically.
- Perform a short sight reading excerpt provided by the judge.

### **Bass Players:**

- Perform the required piece from Jamey Aebersold's *Maiden Voyage*, Volume 54 (see audition selection rotation) with the play-along recording in the following manner:
  - Play one complete time through the melody (i.e. play "the head"), demonstrating appropriate style and inflection;
  - Play an appropriate accompanying bass line that reflects the chord changes for one chorus (once complete time through the form);
  - Improvise a melody for one complete chorus;
  - Return to the head at the appropriate time (when the rhythm section gets to the point of the chord changes where the melody would begin). This time through the head will not be a complete version. The judge will stop the player soon after the return is heard.
- Improvise three complete choruses using either a concert B-flat or F blues. They will perform with the appropriate tracks from *Maiden Voyage* – for B-flat blues, use *Shuffle Time* (track 2) and for F blues, use *Tootsie* (track 12). The written melody is NOT to be performed in this part of the audition. The chord changes indicated for each piece should be used.
  - During the first chorus, play an appropriate accompanying bass line that reflects the chord changes for one chorus
  - During the second and third chorus, the player improvises melodically.
- Perform a short sight reading excerpt provided by the judge.

## High School Jazz Band (continued)

### **Drummers:**

- Perform the required piece from *Sittin' in With the Big Band Volume 2\** **(note that this is a change in volumes from previous years)** drum set book. The play-along recording that does not include drums will be used in the audition. The piece will be played all the way through with the recording.
- Perform stylistically appropriate time-keeping patterns and fills in the following styles:
  - Funk
  - Shuffle swing
  - Jazz waltz
  - Ballad (slow 4 with brushes)
- Perform a sight reading excerpt from a big band chart.

**New drum set rotation using *Sittin' in With the Big Band, Volume 2* published by Alfred Publishing.** (Directors only need to purchase the drum set book and its accompanying CD, currently listed at \$14.95.)

2011-12: *The Red Door*

2012-13: *On Green Dolphin Street*

2013-14: *Jump*

2014-15: *Softly, As in a Morning Sunrise*

## High School Jazz Choir

- prepared piece chosen by the manager from the concert program.
- sung in 4 parts unaccompanied

## Middle School Band

Wind auditions are comprised of the following:

- prepared piece chosen from the rotating list
- major scales - see scale booklet
- chromatic scale - see scale booklet

Percussionists will audition on a specialty instrument (snare drum, timpani, or mallets) on which they will perform a solo, technique specific to that instrument. In addition, they will each audition on auxiliary percussion instruments. Given that players of each specialty instrument earn acceptable scores, the top scoring player of each will be the first selected for the ensembles. The remainder of the positions will be filled by the highest scoring players regardless of specialty instrument. Percussion rudiments required: see p.

## Middle School Chorus

This group is selected from nominations made by individual directors from each school. Directors must audition the students (see M.S. choral audition forms).

### Middle School Jazz Band

- All scales required for junior high band (see scale packet)
- Prepared piece selected; see rotating list
- Concert Bb blues scale (see scale packet)
- Improvisation is encouraged on Bb blues, but not required
- drummers must demonstrate rock and Latin beats in addition to the prepared piece

District VI will not accept any taped auditions made by a student unable to attend the audition. This should help avoid in-school conflicts in advance. Emergencies such as death in the immediate family or illness requiring a physician's excuse will be handled on an individual basis by the ensemble manager and district chairperson.

District VI teachers are urged to use discretion in registering students to audition. Each audition is time consuming, making it imperative that the auditioning student be both prepared and qualified to participate in the festival.

Copies of the student's audition score sheet, including the adjudicator's comments, will be mailed to each school immediately following the formulation of the various ensembles' instrumentation and voicing. Ensemble managers should provide each school with a list of students accepted and an ensemble list showing name, instrument, school and audition score.

All audition score sheets **MUST** be tallied and initialed by each tabulator. In case of a tie occurring above the cut-off score, the student with the highest score on the prepared piece would be seated accordingly.

Following auditions, if an ensemble is weak or missing needed voice or instrumental parts, all schools will be notified and recommendations given to the ensemble manager for their consideration. The festival chairperson upon the recommendation of the ensemble manager must approve any post audition additions. The festival chairperson needs to notify all the schools.

Regarding 6<sup>th</sup> graders participating in a Middle School Ensemble: 6<sup>th</sup> graders can be accepted on a provisional basis if their teacher recommends them. Middle School band and choral directors must petition the District VI Chairperson for permission for exceptional 6<sup>th</sup> graders to be accepted to audition.

# CONCERT BAND INSTRUMENTAL AUDITION GUIDELINES

## Major Scales

- High School - up to and including 3 sharps and 3 flats (not concert pitch) memorized and tongued according to the scale booklet
- Middle School - (SEE SCALE PACKET)

## Chromatic Scale

- High School - play one continuous slur in eighth note triplets the range of the instrument. (see scale booklet)
- Middle School - (SEE SCALE PACKET)

## Sight Reading (High School Only)

- short selection of exercise including Key, meter, dynamics, articulation and rhythms.
- student will be provided ample time to look through the piece before attempted sight reading.

## Meters (Middle School and High School)

Students should be familiar with the following meters:

2	3	4	5	6	3
4	4	4	4	8	8

Rudiments (Middle School and High School) SEE [www.pas.org](http://www.pas.org) for examples of all rudiments

- Snare Drum: flam, ruff, paradiddle, 5 and 9 stroke rolls, long roll (closed)
- Timpani: long roll with/without accented entrance, long roll showing range of dynamics, tuning to stated pitch from given pitch, tuning to given pitch from undetermined starting pitch. (tone matching)

## HIGH SCHOOL CHORUS AUDITION LIST

- 11/12 "Weep O Mine Eyes" (Bennett, arr. Greyson)
- 12/13 "Brothers" (Steubing)
- 13/14 "The Lord Bless You And Keep You" (Lutkin)
- 14/15 "Prayer of Benediction" (Bird)

## HIGH SCHOOL JAZZ CHOIR AUDITION LIST

- 11/12 They Say It's Wonderful, Bukvich

## HIGH SCHOOL BAND & JAZZ BAND AUDITION LISTS

FROM RUBANK "CONCERT AND CONTEST COLLECTION"

All High School Concert Band audition pieces are from "Concert and Contest Collection" so this should be in your library. Students may not audition with photocopies, and will be disqualified if they do. Auditions must be in person, no taped auditions are allowed.

INSTRUMENT	YEAR	SELECTION	PAGE #
<b>Flute &amp; Piccolo</b>	11/12	"Serenade"	14
	12/13	"Menuet"	12
	13/14	"Serenade"	5
	14/15	"Badinerie"	19
<b>Oboe</b>	11/12	"Romance"	7
	12/13	"Allegro"	15
	13/14	"Aria & Rondinello"	3
	14/15	"Menuetto & Presto"	6
<b>Clarinet</b>	11/12	"Ballade"	24
	12/13	"Scherzo in C Minor"	22,23 (no cadenza)
	13/14	"Allegretto Fantasia"	3
	14/15	"Chanson"	15
<b>Alto &amp; Bass Clarinet</b>	11/12	"Lament"	6
	12/13	"Allegro" (only)	10
	13/14	"Largo & Allegro Vivace"	5
	14/15	"Sarabande & Bouree"	2

INSTRUMENT	YEAR	SELECTION	PAGE #
<b>Alto &amp; Baritone Sax</b>	11/12	“Sonatina”	8
	12/13	“Melodie”	5
	13/14	“Largo & Allegro”	12
	14/15	“Introduction & Rondo	14
<b>Tenor Saxophone</b>	11/12	“Piece in G Minor”	12
	12/13	“Two Little Tales”	8
	13/14	“Allegretto”	5
	14/15	“Adagio & Allegro”	22
<b>French Horn</b>	11/12	“Two Outdoor Scenes”	10 no cadenza
	12/13	“Rondo”	17
	13/14	“Scherzo”	5
	14/15	“Farewell Serenade”	7 no last line
<b>Trumpet</b>	11/12	“Morceau de Concours”	20
	12/13	“Concertino”	22
	13/14	“Sarabanda & Gavotta”	2
	14/15	“Air Gai”	8
<b>Trombone &amp; Bassoon</b>	11/12	“Theme de Concours”	8
	12/13	“Canzonetta”	5
	13/14	“Two Spanish Dances”	6
	14/15	“Sarabande & Vivace”	9
<b>Baritone (bass &amp; treble) String Bass</b>	11/12	“Romance in E Flat”	7
	12/13	“Premier Solo de Concours”	4
	13/14	“Sarabande & Gavotta”	2
	14/15	“Concertino”	22
<b>Tuba</b>	11/12	“Allegro” (only)	10
	12/13	“Air Gai”	8
	13/14	“Two Short Pieces”	4
	14/15	“Allegro” (only)	14
<b>Mallets</b> - All selections are from Fundamental Studies for Mallets by Garwood Whaley			
	11/12	“Bouree”	30
	12/13	“Sonatina”	26
	13/14	“Sonatina”	32
	14/15	“Larghetto”	35

INSTRUMENT	YEAR	SELECTION	PAGE #
<b>Timpani</b> - All selections from Intermediate Studies for Timpani by Garwood Whaley			
	11/12		page 6
	12/13		page 8
	13/14		page 40
	14/15		page 10

**Snare Drum** - All selections are from Portraits in Rhythm by Anthony Cirone

11/12	#29
12/13	#25
13/14	#23
14/15	#1

**High School Jazz Band - All Selections from Jamey Abersold - Volume 54 Maiden Voyage, except for drum set.**

Volume 54 Maiden Voyage- Jamey Abersold	11/12	Impressions	
Volume 54 Maiden Voyage- Jamey Abersold	12/13	Autumn Leaves	
Volume 54 Maiden Voyage- Jamey Abersold	13/14	Song for my Father	Drum set: "Now What" from Sittin' in with the Big Band – published by Alfred
Volume 54 Maiden Voyage- Jamey Abersold	14/15	Doxy	Drum set: "Drummin' Man" from Sittin' in with the Big Band- published by Alfred

## MIDDLE SCHOOL AUDITION LISTS

### Middle School Chorus

11/12	Alleluia, Mozart
12/13	Da Pacem Domine, Melchior Franck, arr. Goetze

### Middle School Jazz Band

11/12	Groovin' Hard, Peter Blair
12/13	You Only Get One Chance, arr. Andy Clark

## **Middle School Band**

The Middle School District VI Band audition moved to a new format in 2010-2011 and will continue using the same format for 2011-2012:

### **Wind Players:**

A. Students are required to perform scales from memory as shown on the District created scale sheet. (<http://vmea.org/dist6/downloads.html>)

B. Every student will audition on two short excerpts:

1. The first is a Bach chorale, which can be taught in a full band setting even though there are different parts.
2. The second is an excerpt from a piece that is instrument specific and chosen by music colleagues within the District. These two excerpts give students the opportunity to demonstrate technical, as well as musical, elements of their musical performance.
3. Contact Tom Nasiatka at Brattleboro Middle School with Middle School Band questions [tom\\_nasiatka@wsesu.org](mailto:tom_nasiatka@wsesu.org)

### **Percussionists:**

A. Each student will choose either snare, timpani, or mallets and audition on the piece that is associated with whichever instrument is chosen.

B. ALL percussion students will learn the auxiliary instrument piece (the same music that we've been using for years - THIS PIECE IS NOT ON THE WEBSITE). Since all students will audition on auxiliary instruments, percussionists will be exempt from learning the chorale.

# **FESTIVAL INFORMATION REGULATIONS AND PROCEDURES**

Festival location may be in any District VI school or area facility

- 1) Participation
  - a) No student is to miss any rehearsal or portion thereof FOR ANY REASON. Failure to follow this specific regulation will result in immediate dismissal from the festival.
  - b) Students will not be allowed to participate in any following year's district festivals if they commit themselves to a group and then back out. Exceptions (i.e. academic ineligibility, documented illness, death in the family) must be approved by the district chairperson. A commitment is made when the registration form and fees have been sent in. There will be no refunds.
  - c) Teachers must recognize that all participating students are responsible for knowing festival rules and regulations beforehand.
  - d) Failure to comply with any further rules or regulations may result in dismissal from the festival, decision to be made between: the festival host, ensemble manager, and district chairperson. In the event that disciplinary action has to be taken, contact with the student's teacher will be made. In extreme cases, the student's parents and principal may be notified.
- 2) Rehearsals
  - a) Music teachers should register their students before the first general meeting on Friday. If there is any problem with this time, the teacher will contact the host as soon as possible.
  - b) Students must be on time for all rehearsals and concerts ( see 1.a)
  - c) Students are responsible for their own property. Name and school should be on all equipment, cases and music folders.
  - d) Students will remain within the festival sight at all times.
  - e) Smoking is not permitted at any time by any participating student.
  - f) Materials to bring:
    - i) 2 (TWO!!!!) pencils
    - ii) all necessary music and instruments
    - iii) bag lunch for both days
    - iv) concert clothing to change into Saturday
    - v) water bottle
  - g) Wear appropriate yet comfortable clothing for rehearsals; No hats.
  - h) The need for large and/or unusual instruments and their storage should be brought to the attention of the festival host.
- 3) Concert attire:
  - a) High School Band and Chorus
    - i) Boys-dark pants, white shirt & tie
    - ii) Girls-dark skirt and white blouse. Skirt must be knee length or longer, no slits above knee length
  - b) Jazz Band and choir: TBA by conductors 2-3 weeks ahead of time
  - c) Middle School Band and Chorus:

- i) Boys-dark pants, light colored shirt and tie (no jackets)
- ii) Girls-dresses or skirt and blouse. Skirt must be knee length or longer, no slits above knee length.
- d) Dark shoes are required for performance.

**TENTATIVE REHEARSAL SCHEDULE FOR ALL ENSEMBLES:**

FRIDAY.....9:00-9:45registration  
 9:45 .....general meeting for everyone  
 10:00-12:00.....rehearsals  
 12:00-1:00.....lunch  
 1:00-4:00.....rehearsals  
 4:00 .....dismissal  
 SATURDAY.....8:45arrival, store concert attire  
 9:00-12:00.....rehearsals  
 12:00-1:00.....lunch  
 1:00-3:00.....dress rehearsals  
 3:00-3:30.....dress for concert  
 3:30-4:00.....tune/warm-up

4:00 CONCERT

# CONNECTICUT VALLEY MUSIC FESTIVAL ASSOCIATION

## District VI – VMEA Expense Reimbursement Form



Date \_\_\_\_\_

To the Treasurer

Please pay the sum of: \_\_\_\_\_

To: \_\_\_\_\_

Address: \_\_\_\_\_

\_\_\_\_\_

\_\_\_\_\_

For: \_\_\_\_\_

Event or Title: \_\_\_\_\_

Name Printed: \_\_\_\_\_

Signature: \_\_\_\_\_

Connecticut Valley Music Festival Association  
 Vermont Music Educators Association - District VI

**FESTIVAL ACCEPTANCE FORM**  
 (Return with one Check to Treasurer)

School: \_\_\_\_\_

Cancellations:	Name Corrections:
group:	group:

I am registering the following number of students for each group:

**Fall Festival:**

- \_\_\_\_\_ MS Chorus
- \_\_\_\_\_ MS Jazz Band
- \_\_\_\_\_ HS Jazz Choir
- \_\_\_\_\_ HS Concert Band

**Winter Festival**

- \_\_\_\_\_ MS Concert Band
- \_\_\_\_\_ HS Chorus
- \_\_\_\_\_ HS Jazz Band

\_\_\_\_\_ **Total x \$10 =** \_\_\_\_\_

\_\_\_\_\_ **Total x \$10 =** \_\_\_\_\_

Please make one check payable to: Connecticut Valley Music Festival Association  
 Mail fees to the CVMFA Treasurer:

Paul Rondinone  
 677 Dawson Road  
 East Wallingford, VT 05742

Connecticut Valley Music Festival Association  
Vermont Music Educators Association District VI

**ENSEMBLE PREFERENCE SHEET**

School: \_\_\_\_\_ Director: \_\_\_\_\_

If your students are auditioning for more than one ensemble and/or instrument, please list their order in preference. This order will be respected unless the festival organizations require otherwise.

Name: \_\_\_\_\_ 1<sup>st</sup> \_\_\_\_\_  
Grade: \_\_\_\_\_ 2<sup>nd</sup> \_\_\_\_\_  
3<sup>rd</sup> \_\_\_\_\_

Name: \_\_\_\_\_ 1<sup>st</sup> \_\_\_\_\_  
Grade: \_\_\_\_\_ 2<sup>nd</sup> \_\_\_\_\_  
3<sup>rd</sup> \_\_\_\_\_

Name: \_\_\_\_\_ 1<sup>st</sup> \_\_\_\_\_  
Grade: \_\_\_\_\_ 2<sup>nd</sup> \_\_\_\_\_  
3<sup>rd</sup> \_\_\_\_\_

Name: \_\_\_\_\_ 1<sup>st</sup> \_\_\_\_\_  
Grade: \_\_\_\_\_ 2<sup>nd</sup> \_\_\_\_\_  
3<sup>rd</sup> \_\_\_\_\_

Name: \_\_\_\_\_ 1<sup>st</sup> \_\_\_\_\_  
Grade: \_\_\_\_\_ 2<sup>nd</sup> \_\_\_\_\_  
3<sup>rd</sup> \_\_\_\_\_

Name: \_\_\_\_\_ 1<sup>st</sup> \_\_\_\_\_  
Grade: \_\_\_\_\_ 2<sup>nd</sup> \_\_\_\_\_  
3<sup>rd</sup> \_\_\_\_\_

Name: \_\_\_\_\_ 1<sup>st</sup> \_\_\_\_\_  
Grade: \_\_\_\_\_ 2<sup>nd</sup> \_\_\_\_\_  
3<sup>rd</sup> \_\_\_\_\_

Name: \_\_\_\_\_ 1<sup>st</sup> \_\_\_\_\_  
Grade: \_\_\_\_\_ 2<sup>nd</sup> \_\_\_\_\_  
3<sup>rd</sup> \_\_\_\_\_















# MIDDLE SCHOOL CHORAL AUDITION FORM

Student name \_\_\_\_\_ School \_\_\_\_\_

Circle the appropriate voice part. Soprano      Alto      Baritone

**1. Major scale:** Ascending and descending, using solfege syllables (circle one)

- |                                                 |   |
|-------------------------------------------------|---|
| All pitches in tune                             | 5 |
| Some pitches out of tune                        | 3 |
| Significant number of pitches in need of tuning | 1 |

**2. Pitch Matching:** Teacher plays or sings pitch- Student matches a cappella.

Circle each pitch the student matches correctly.



(7 points possible)      \_\_\_\_\_

**3. Sing audition selection from the audition list**

**Intonation**

- |                                                 |   |
|-------------------------------------------------|---|
| All pitches in tune                             | 5 |
| Minor intonation problems                       | 4 |
| Some pitches out of tune                        | 3 |
| Many pitches out of tune                        | 2 |
| Significant number of pitches in need of tuning | 1 |

**Blend**

- |                           |   |
|---------------------------|---|
| All passages blended well | 5 |
| Blend not achieved        | 1 |

**Rhythm**

- |                                             |   |
|---------------------------------------------|---|
| All rhythms accurately performed            | 5 |
| One or two rhythmic inaccuracies            | 3 |
| Significant number of rhythmic inaccuracies | 1 |

**Independence**

- |                                     |   |
|-------------------------------------|---|
| Independent throughout entire piece | 5 |
| Lost part and regained place        | 3 |
| Significant number of parts lost    | 1 |

**4. Posture**

- |                                             |   |
|---------------------------------------------|---|
| Student stands with correct posture         | 2 |
| Student does not stand with correct posture | 0 |

Total \_\_\_\_\_

If selected as a member of the Fall District Music Festival held on **November 18 & 19, 2011** at \_\_\_\_\_, I am prepared to make the following commitment to the district chorus, meeting all requirements: financial, musical and behavioral.

Student's Signature \_\_\_\_\_ Date \_\_\_\_\_

Parent's Signature \_\_\_\_\_ Date \_\_\_\_\_

Director's Signature \_\_\_\_\_ Date \_\_\_\_\_